



Company Presentation

CERTIFICATO DI QUALITÀ

ISO 9001



Current Issue Date: 29 August 2024
Expiry Date: 28 August 2027
Certificate Identity Number: 10631141

Original approval(s):
ISO 9001 - 29 August 2024

Certificate of Approval

This is to certify that the Management System of:

ITALMEC SRL

Via E. de Litta 8R, 17047 Valleggia di Quiliano (SV), Italy

has been approved by LRQA to the following standards:

ISO 9001:2015

Approval Number(s): ISO 9001 – 00046103

The scope of this approval is applicable to:

Supply of forgings, castings and rolled products, joineries including mechanical processes of roughing and finishing on customer specifications.

Marta Escudero

Regional Director, Europe

Issued by: LRQA Limited



LRQA Group Limited, its affiliates and subsidiaries and their respective officers, employees or agents are, individually and collectively, referred to in this clause as 'LRQA'. LRQA assumes no responsibility and shall not be liable to any person for any loss, damage or expense caused by reliance on the information or advice in this document or howsoever provided, unless that person has signed a contract with the relevant LRQA entity for the provision of this information or advice and in that case any responsibility or liability is exclusively on the terms and conditions set out in that contract.
Issued by: LRQA Limited, 1 Trinity Park, Bickenhill Lane, Birmingham B37 7EG, United Kingdom





INDICE / INDEX

- 1. Profilo aziendale**
- 2. Turbine & Generatori**
- 3. Idroelettrico**
- 4. Navale**
- 5. Difesa**
- 6. Divisione Cuscinetti**
- 7. Oil & Gas**
- 8. Servizi & Contatti**

- 1. Company Profile**
- 2. Turbines & Generators**
- 3. Hydropower**
- 4. Marine**
- 5. Defense**
- 6. Bearings Division**
- 7. Oil & Gas**
- 8. Services & Contacts**



CHI SIAMO / ABOUT US

ItalMEC è un'azienda metalmeccanica attiva dal 1963, specializzata nella produzione e lavorazione di componenti in acciaio, leghe speciali e materiali non ferrosi. Grazie alla nostra esperienza pluridecennale, alla flessibilità produttiva e a un parco macchine avanzato, realizziamo componenti grezzi, sgrossati o finiti secondo disegno, garantendo la massima qualità, affidabilità, rapidità e tracciabilità in ogni fase del processo.

ItalMEC is a metalworking company active since 1963, specialized in the manufacturing and machining of steel components, special alloys and non ferrous materials. Thanks to our decades of experience, production flexibility and advanced machine fleet, we supply rough, semi finished and finished parts according to customer drawings, ensuring maximum quality, reliability, fast turnaround and full traceability throughout every stage of the process.





STORIA / HISTORY

ItalMEC nasce come trader di acciai al carbonio, inox e speciali. Per offrire ai propri clienti un servizio completo, nel 1963 acquisisce OCEM – Costruzioni Elettromeccaniche, integrando così competenze produttive e capacità di lavorazione meccanica.

Nel corso dei decenni l'azienda cresce, amplia il parco macchine e sviluppa competenze avanzate nella tornitura, fresatura e produzione di componenti in acciaio e leghe speciali.

Grazie a investimenti continui in tecnologia, formazione e controllo qualità, ItalMEC diventa un partner affidabile per i principali settori industriali: turbine a gas e a vapore, generatori, idroelettrico, navale, difesa, oil & gas e cuscinetti di grandi dimensioni.

ItalMEC was originally established as a trader of carbon steels, stainless steels and special alloys. To provide its customers with a complete and integrated service, in 1963 the company acquired OCEM – Electromechanical Constructions, adding in house manufacturing and mechanical machining capabilities.

Over the following decades, the company expanded its machine fleet and developed advanced expertise in turning, milling and the production of steel and special alloy components.

Through continuous investments in technology, training and quality control, ItalMEC has become a trusted partner for major industrial sectors: gas and steam turbines, generators, hydropower, marine, defense, oil & gas and large size bearings.



STABILIMENTO / FACILITY

5.000 m² di cui 2500 m² coperti di area produttiva, reparti dedicati a tornitura, fresatura, foratura, controllo qualità. L'organizzazione degli spazi e il parco macchine in costante aggiornamento permettono ad ItalMEC di garantire efficienza, precisione e rapidità in ogni fase del processo produttivo.

5,000 m² of production area, including 2,500 m² covered, dedicated turning, milling, drilling and quality control departments. The layout of the facility and the continuously updated machine fleet allow ItalMEC to ensure efficiency, precision and fast turnaround throughout the entire production process.



CAPACITÀ PRODUTTIVE

- Diametri fino a 2.500 mm – Peso fino a 11.000 kg in tornitura
- Diametro massimo 8.000 mm × 2.800 mm in fresatura

ItalMEC è in grado di lavorare componenti di grandi dimensioni per la meccanica generale, grazie a un parco macchine avanzato e reparti dedicati alla tornitura, fresatura e foratura pesante.

La combinazione di capacità produttiva, precisione e flessibilità ci permette di soddisfare le esigenze dei principali settori industriali.

- Disponiamo inoltre di una sala metrologica equipaggiata con una CMM COORD3 di grandi dimensioni (1.600 mm × 1.300 mm × 1.000 mm), che garantisce controlli dimensionali ad alta precisione anche su particolari complessi e di grandi volumi.

PRODUCTION CAPABILITIES

- Turning capacity: diameters up to 2,500 mm – Weight up to 11,000 kg Milling capacity:
- Maximum diameter 8,000 mm × 2,800 mm

ItalMEC is capable of machining large dimension components for general engineering, supported by an advanced machine fleet and dedicated departments for turning, milling, and heavy drilling.

The combination of production capacity, precision, and flexibility allows us to meet the requirements of major industrial sectors.

- We also operate a metrology room equipped with a COORD3 CMM with a large measuring volume (1,600 mm × 1,300 mm × 1,000 mm), ensuring high precision dimensional inspection of complex and oversized



TURBINE & GENERATORI

Turbines and Generators

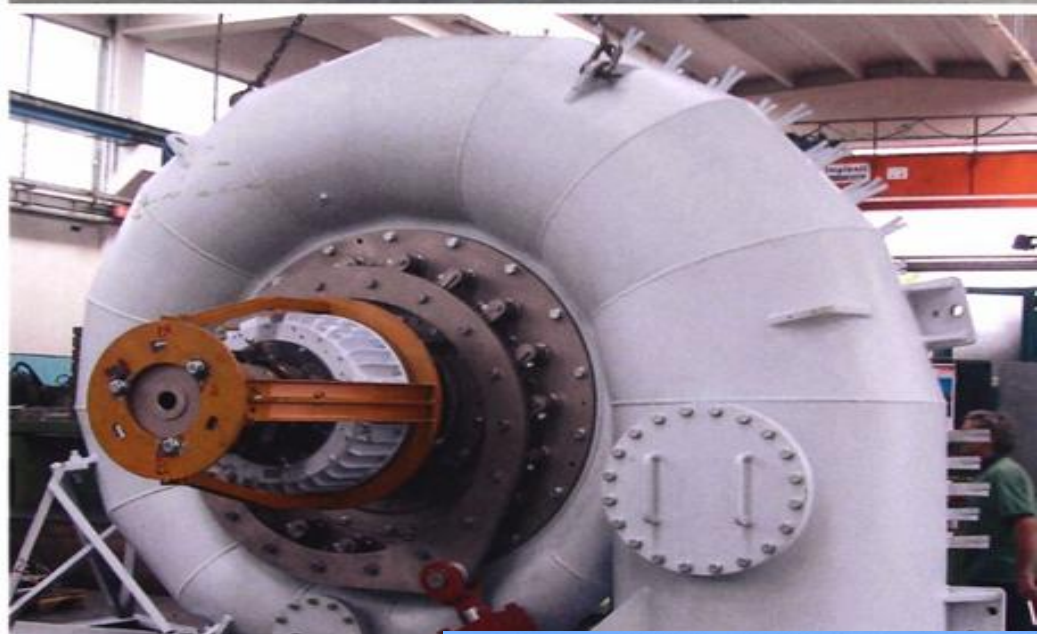
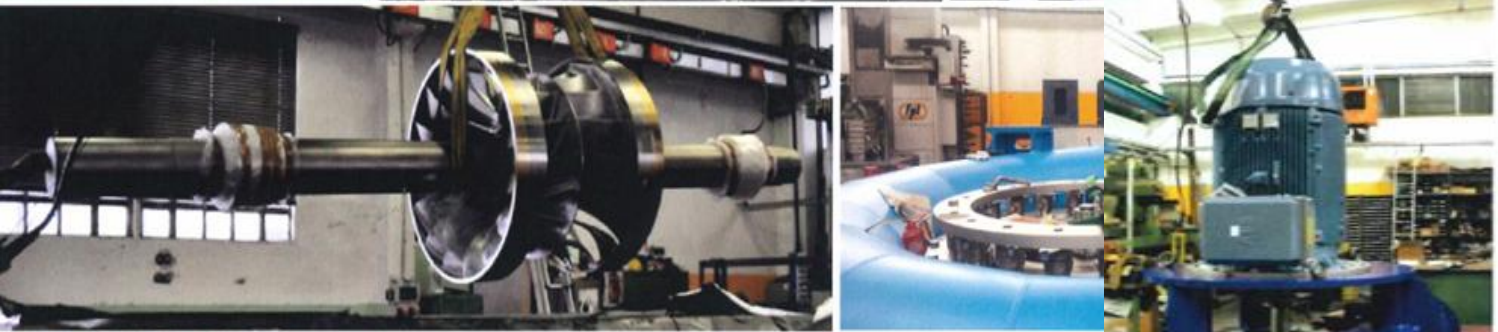
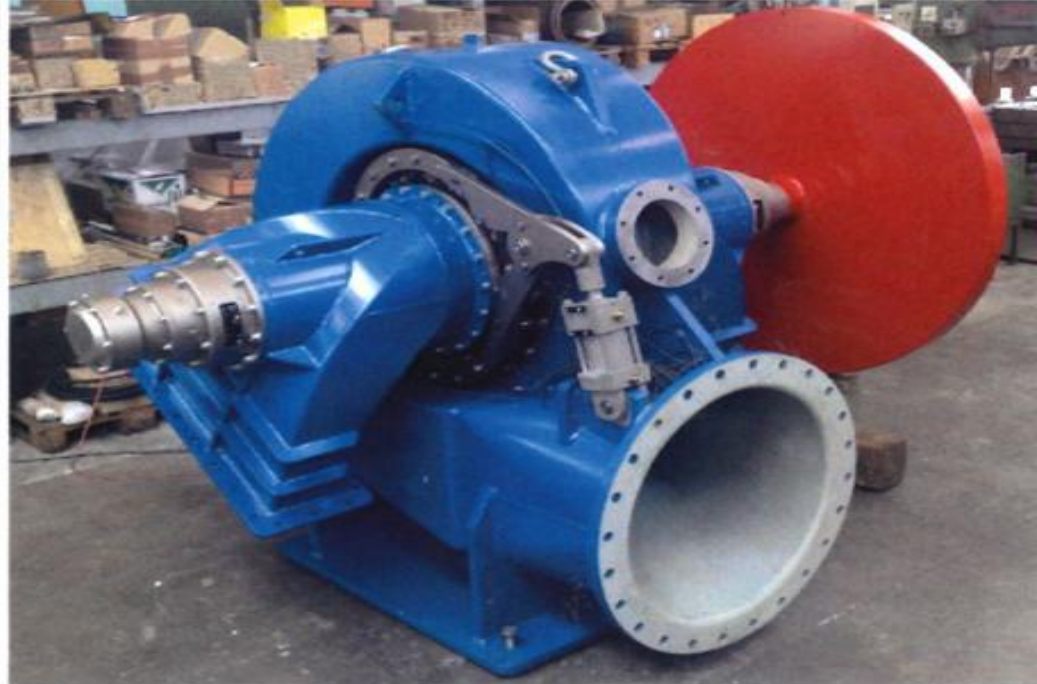




IDROELETTRICO / HYDROPOWER

Hydropower







NAVALE / MARINE



DIFESA / DEFENSE





DIVISIONE CUSCINETTI

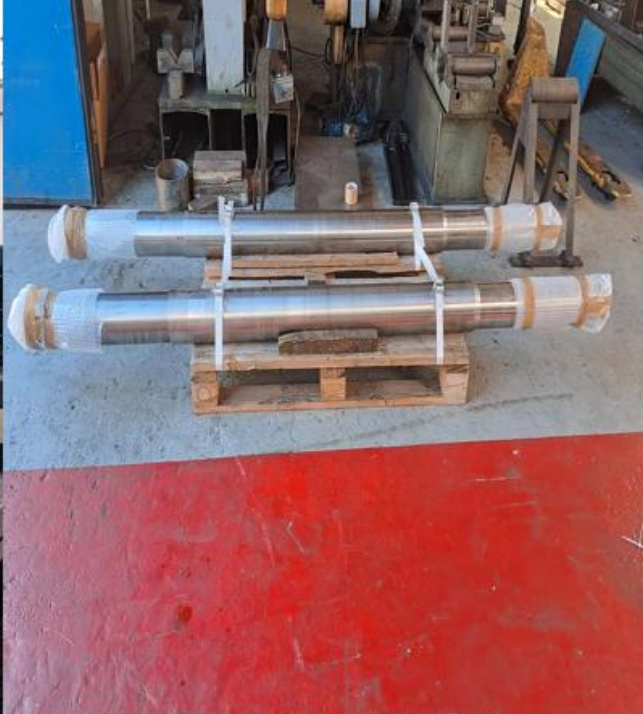
Bearings Division





PETROLIO & GAS / OIL & GAS





SERVIZI / SERVICES

- Lavorazioni meccaniche CNC
- Tornitura verticale e orizzontale
- Fresatura 3-5 assi
- Rettifica e foratura profonda
- Trattamenti termici e superficiali
- Controlli non distruttivi, CND
- Gestione materiali e tracciabilità completa
- CNC machining
- Vertical and horizontal turning
- 3-5 axis milling
- Grinding and deep drilling
- Heat and surface treatments
- Non - Destructive testing, NDT
- Material management and complete traceability



I NOSTRI PRINCIPALI CLIENTI

OUR MAIN CLIENTS



Principali Clienti:

- Ansaldo
- Baker Hughes
- Fincantieri
- Trillium
- Termomeccanica
- Danieli
- GE Vernova
- Sulzer
- Enel
- Eni
- Edison
- EDF
- Siemens
- Voith

Main Clients:

- Ansaldo
- Baker Hughes
- Fincantieri
- Trillium
- Termomeccanica
- Danieli
- GE Vernova
- Sulzer
- Enel
- Eni
- Edison
- EDF
- Siemens
- Voith



VOITH

SIEMENS



ALSTOM

HITACHI
Inspire the Next

LEONARDO

CONTATTI / CONTACTS

ItalMEC S.r.l.

- Sede Legale: Via Fieschi, 3/15
16121 Genova (GE) – Italia
- Sede Operativa: Via De Littà, 8/R
17047 Valleggia (SV)
- Codice Fiscale e Partita IVA: 02077110993 • REA Genova 458160
- Tel. +39 019 4502173 • Fax. +39 019 4502181 • Web: www.italmec-srl.it



Grazie / Thank You

